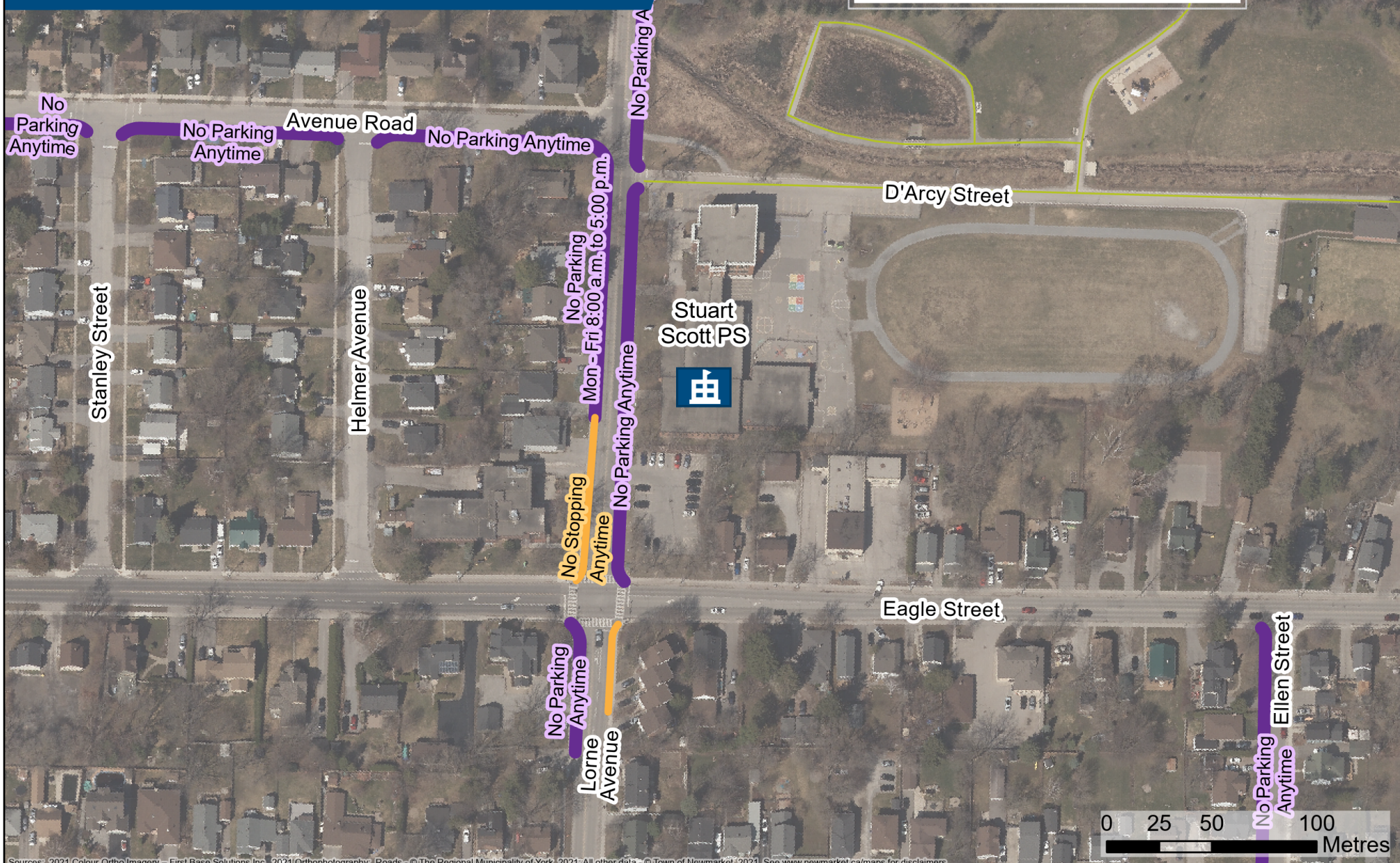


Town of Newmarket - School Parking Restrictions
STUART SCOTT PUBLIC SCHOOL
 247 LORNE AVE

This map is for reference only.
 Please continue to follow all rules of the road,
 observe all posted signage and adhere to the
 Town's parking by-law .



Sources : 2021 Colour Ortho Imagery – First Base Solutions Inc., 2021 Orthophotography, Roads – © The Regional Municipality of York, 2021; All other data – © Town of Newmarket, 2021. See www.newmarket.ca/maps for disclaimers.

Parking Restrictions

- No Parking
- No Stopping
- Elementary School
- Future road
- Railway
- Trail

Designed & Produced by
 Information Technology – GIS
 Printed: December, 2021

