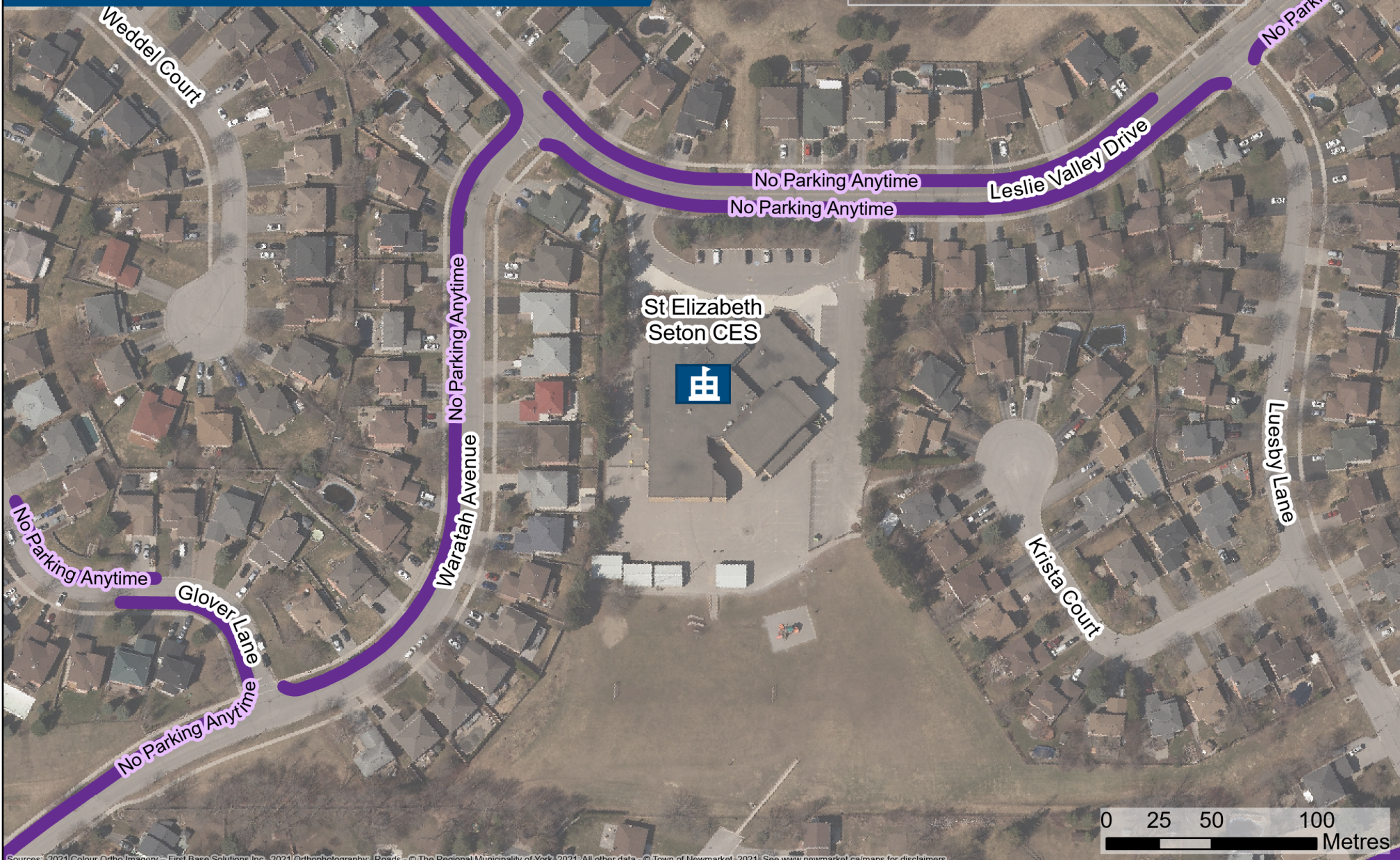


ST ELIZABETH SETON CES



960 LESLIE VALLEY DR



This map is for reference only.
Please continue to follow all rules of the road,
observe all posted signage and adhere to the
Town's parking by-law .




Sources: ©2021 Colour Ortho Imagery – First Base Solutions Inc., ©2021 Orthophotography; Roads – © The Regional Municipality of York, 2021; All other data – © Town of Newmarket, 2021. See www.newmarket.ca/maps for disclaimers.

Parking Restrictions

-  No Parking
-  No Stopping

-  Elementary School
-  Future road

-  Railway
-  Trail

Designed & Produced by
Information Technology – GIS
Printed: December, 2021

